



TECHNAL®

By Hydro

ST2 Thermally Broken Aluminium Commercial Doors



WEATHER PERFORMANCE

- Capable of BS6375-1:2015 watertightness levels:
- Centre Pivot AFT single door - Class 3A (100 Pa)
- Hinged Rebated single door - Class 5A (200Pa)

THERMAL PERFORMANCE

The STII Door offers high levels of thermal insulation achieving a U value of 1.8W/m²k for doors without midrails and 1.9W/m²k for doors with midrails depending on size and glazing specification. This low U value can help building designers to achieve their Target Emissions Rate (TER) by being offset against the allowable U value of 3.5 W/m²K for high traffic doors when calculating the Building Emissions Rate (BER)

2010 EQUALITY ACT COMPLIANT

Available with specialist door closers adjustable for strengths EN1 to EN4 allowing for fine adjustment on site and removing the need to stock multiple closers.

The closer meets all the requirements of document M and BS8300.

Also available with compliant low threshold and pull handle options.



By  Hydro

		MIN LEAF SIZE	MAX LEAF SIZE	MAX LEAF WEIGHT
SINGLE DOORS	CENTRE PIVOT	400mm x 1950mm	1175mm x 3000mm	100kg
	REBATED	300mm x 1950mm	1300mm x 3000mm	140kg
DOUBLE DOORS	CENTRE PIVOT	400mm x 1950mm	1150mm x 3000mm	100kg
	REBATED	300mm x 1950mm	1300mm x 3000mm	140kg

ALL DOORS	DOOR LEAVES	Glazing beads and gaskets can accommodate insulating glass units and/or panels of 28mm - 46mm nominal thickness
	POCKET FRAMING	Pocket Framing - Gaskets can accommodate insulating glass units and/or panels of 32mm nominal thickness
	FIXED LIGHTS	5m ² max pane area

CERTIFIED TO THE RELATIVE CLAUSES WITHIN BS4873:2018 AND PAS24: 2016

Technal STII Single Leaf, Centre Pivot, 2 x Single Point Locks, Glazed Door

Technal STII Double Leaf, Centre Pivot, 2 x Single Point Locks + Shootbolt Gearbox & Rods, Glazed Door

Technal STII Single Leaf, Centre Pivot, Multi-Point Lock, Glazed Door

Technal STII Double Leaf, Centre Pivot, Multi-Point Lock + Shootbolt Gearbox & Rods, Glazed Door

Technal STII Single Leaf Open Out, Centre Pivot, 2 x Mag Locks, Glazed Door

Technal STII Double Leaf Open Out, Centre Pivot, 2 x Mag Locks + 2 x Mechanical Locks, Glazed Door

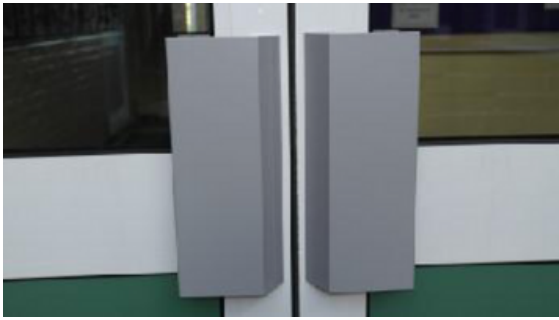
Technal STII Single Leaf Open Out, Centre Pivot, Surface Mounted Panic Bolt, Glazed Door

Technal STII Double Leaf Open Out, Centre Pivot, 2 x Surface Mounted Panic Bolts, Glazed Door

Technal STII Single or Double Leaf, Centre Pivot, Surface Mounted Panic Bolt And External Access Device With Pull Handle And BS EN 1303:2005 Rim Cylinder, Glazed Door

All doors tested with options for:

- Pivot anti finger trap stiles
- Low threshold
- Fixed light framing



300mm Pad Handles
(Our Standard Handle)

Handles shown below are subject to additional costs
Please see our quotation for costs

Alpro 97 Series
Full Height Tubular



Alpro 03 Series
Circular Tubular



Alpro 02 Series
Cranked 'D' Tubular



Concealed Panic Bar



Shoot Bolt Top & Bottom

Escape Lock with lever handles



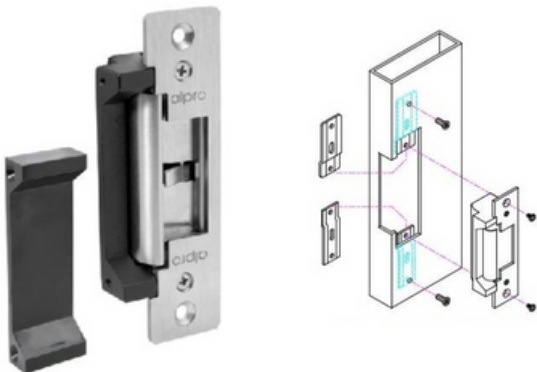
Remains locked externally

In means of escape door will unlock when handle is operated internally

Magnetic Lock



Electric Release Strike



**Standard Locking Options
(Subject to additional costs)**

PAS 24 Panic Bar



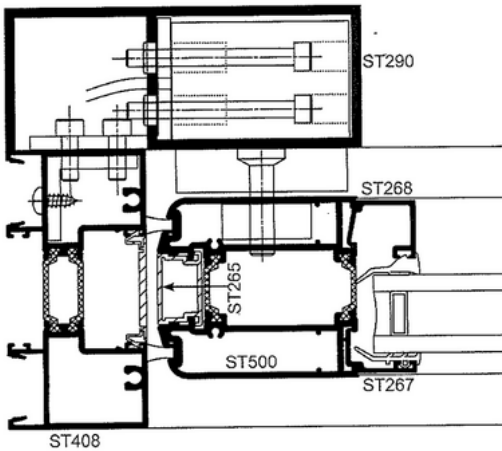
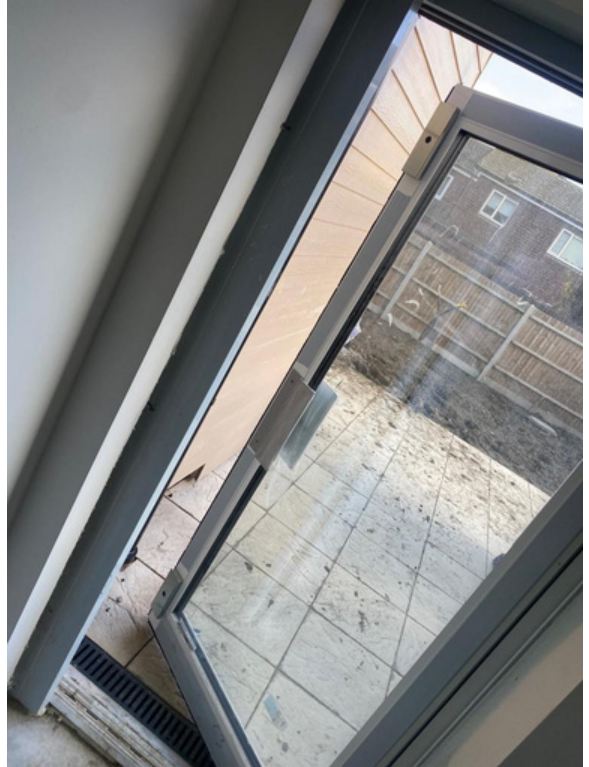
External access handle option

**PAS 24 Locking Options
(Subject to additional costs)**

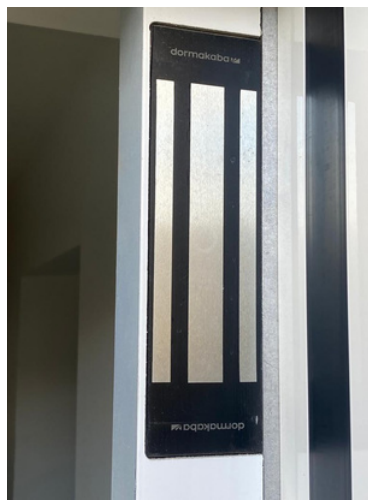
PAS 24 Magnetic Lock



Single door Magnetic Lock Housing



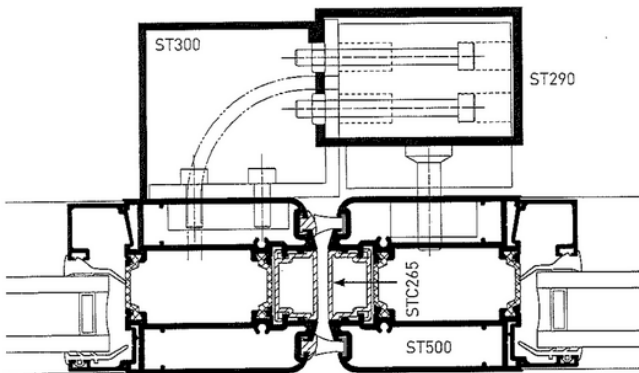
Single door section detail



Magnetic Lock in housing

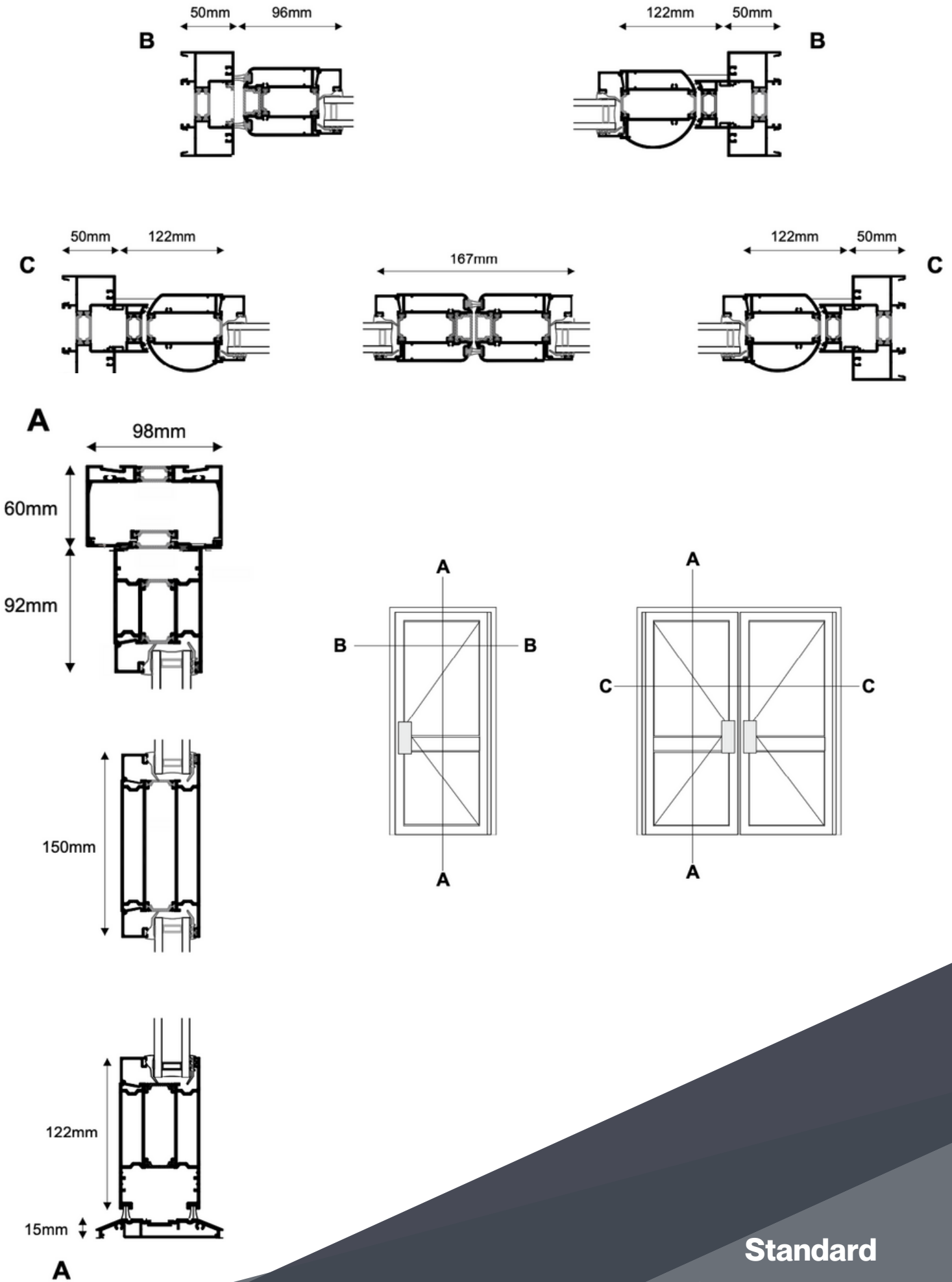


Magnetic Lock on Door Leaf



Double door section detail

PAS 24 Locking Options
(Subject to additional costs)





Clivnars Ltd
Pindar Road
Hoddesdon
Hertfordshire
EN11 0EA
www.clivnars.co.uk
estimating@clivnars.co.uk